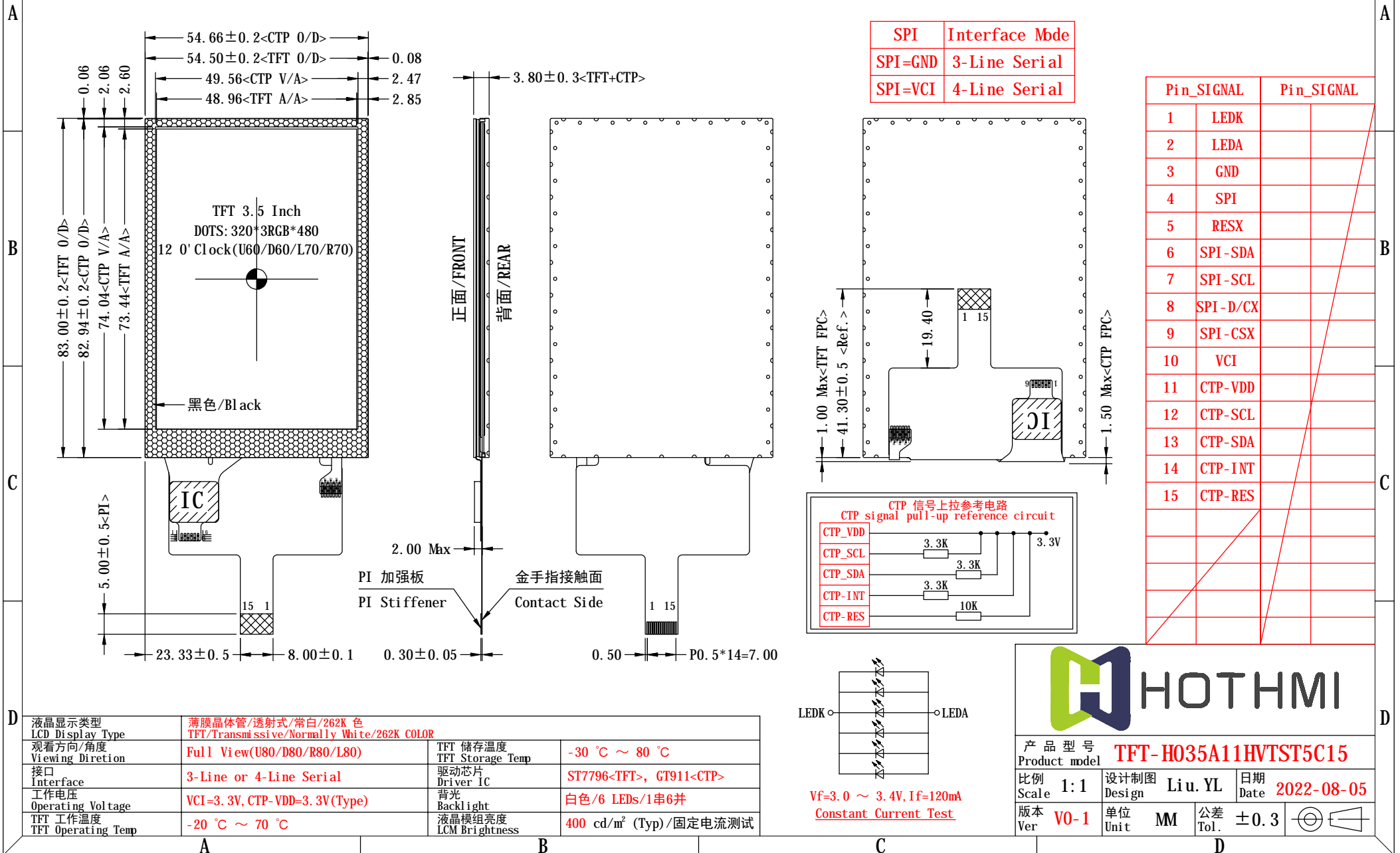
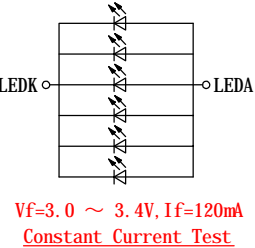
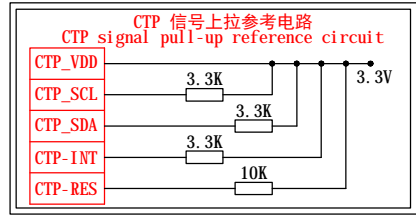


**\*\*\*为防止LCD产生图像残留，在使用常黑面板时不要长时间显示固定图案。如果LCD需要显示固定图案，建议时间少于 2 分钟或者更短的时间内刷新显示内容一次或多次。**  
**\*\*\*In order to prevent the LCD from producing image retention, do not display a fixed pattern for a long time when using a normally black panel. If the LCD needs to display a fixed pattern, it is recommended to refresh the display one or more times in less than 2 minutes or less.**  
**强烈建议使用黑色图像或移动图像作为屏幕保护程序。It is strongly recommended to use a black image or moving image as a screen saver.**



SPI	Interface Mode
SPI=GND	3-Line Serial
SPI=VCI	4-Line Serial

Pin	SIGNAL	Pin	SIGNAL
1	LEDK		
2	LEDA		
3	GND		
4	SPI		
5	RESX		
6	SPI-SDA		
7	SPI-SCL		
8	SPI-D/CX		
9	SPI-CSX		
10	VCI		
11	CTP-VDD		
12	CTP-SCL		
13	CTP-SDA		
14	CTP-INT		
15	CTP-RES		



**HOTHMI**

产品型号 **TFT-H035A11HVTST5C15**  
 Product model

比例 1:1 | 设计制图 Liu.YL | 日期 2022-08-05  
 Scale | Design | Date

版本 V0-1 | 单位 MM | 公差 ±0.3  
 Ver | Unit | Tol.

液晶显示类型 LCD Display Type	薄膜晶体管/透射式/常白/262K 色 TFT/Transmissive/Normally White/262K COLOR		
观看方向/角度 Viewing Direction	Full View(U80/D80/R80/L80)	TFT 储存温度 TFT Storage Temp	-30 °C ~ 80 °C
接口 Interface	3-Line or 4-Line Serial	驱动芯片 Driver IC	ST7796<TFT>, GT911<CTP>
工作电压 Operating Voltage	VCI=3.3V, CTP-VDD=3.3V(Type)	背光 Backlight	白色/6 LEDs/1串6并
TFT 工作温度 TFT Operating Temp	-20 °C ~ 70 °C	液晶模组亮度 LCM Brightness	400 cd/m <sup>2</sup> (Typ)/固定电流测试